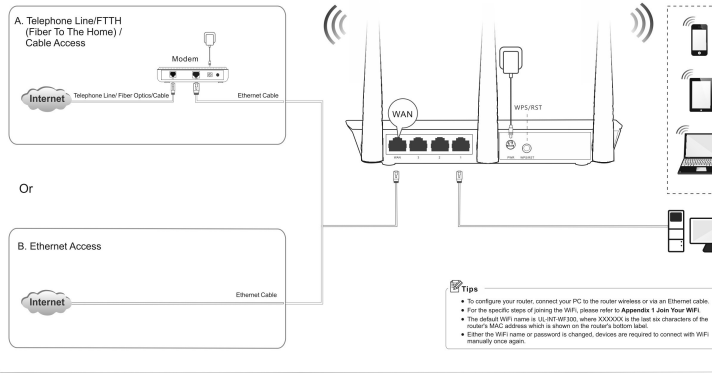


## Install Guide

Wireless N300 Easy Setup Router  
Model: UL-INT-WF300



LED Indicator	Status	Description
SYS	Blinking	The system is working fine.
	Off	There is no power supply, or the router malfunctions.
WiFi	Solid	WiFi is enabled.
	Blinking	The Router is transmitting WiFi data.
1/2/3	Off	WiFi is disabled.
	Solid	The LAN port is well-connected.
	Blinking	The LAN port is transmitting data.
	Off	No link is detected on the LAN port.
WAN	Solid	The WAN port is well-connected.
	Blinking	The WAN port is transmitting data.
	Off	No Ethernet cable is connected to the WAN port.
	Solid (5 minutes)	WPS negotiation is successful. The LED indicator stays solid for 5 minutes and then turns off.
WPS	Blinking	The router is waiting or is performing WPS negotiation with a wireless client.
	Off	WPS function is disabled. WPS negotiation is failed.
T	Reserved.	

Your router's buttons may differ. Please refer to the actual product.

Button	Description
WPS/RSST	Press and hold for about 2 seconds and then release it (all LED indicators will light up once) to reset the router to factory default settings. Press and hold for 1-3 seconds, and then release it to enable the WPS feature. Within 2 minutes, enable the wireless device's WPS feature to establish WPS connection.

\*Images herein are for reference only. The actual product may differ.

### Package Contents

- Wireless Router\*1
- Power Adapter\*1
- Ethernet Cable\*1
- Install Guide\*1

If any part is missing, missing or damaged, please keep the original package and contact your dealer for immediate replacement.

### Tips

- To configure your router, connect your PC to the router wireless or via an Ethernet cable.
- For the specific steps of using the WiFi, please refer to Appendix 1 Join Your WiFi.
- The default WiFi name is UL-INT-WF300, where XXXXXX is the last six characters of the router MAC address which is printed on the router's bottom label.
- Either the WiFi name or password is changed, devices are required to connect with WiFi manually every again.

## 2 Configure Your Router

- Start a web browser, say IE, type 192.168.1 in the address bar, and tap Enter on the keyboard.
- If you use the router for the first time or after you reset the router, the router automatically detects your internet connection type. You are recommended to select the detected type to configure the internet settings. Besides, the following table may help you understand your internet connection type and complete the configuration.



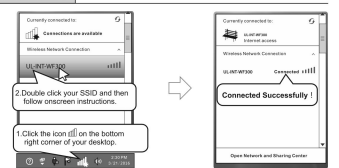
Internet Connection Type	Features	Instructions
PPPoE	If you can access the internet only after setting up a dial-up connection on your computer, select PPPoE.	Select PPPoE, type the PPPoE user name and password provided by your ISP, customize a WiFi name and password to secure your wireless network, and click OK.
Dynamic IP	If you can access the internet without setting any parameters on your computer, select Dynamic IP.	Select Dynamic IP, customize a WiFi name and password to secure your wireless network, and click OK.
Static IP	If you can access the internet only after setting static IP address and other related information on your computer, select Static IP.	Select Static IP, type the static IP address and related information provided by ISP, customize a WiFi name and password to secure your wireless network, and click OK.

--End. You can now try accessing the internet.

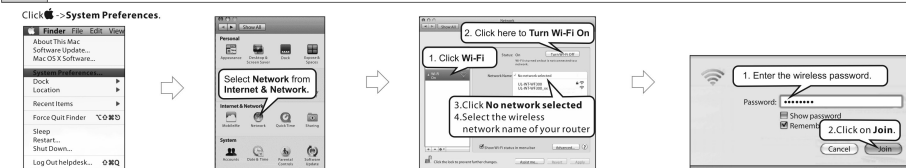
## Appendix 1 Join in Your WiFi

The default WiFi name is UL-INT-WF300. There is no default WiFi password.

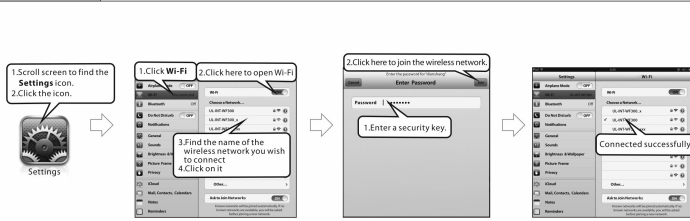
### Windows 7



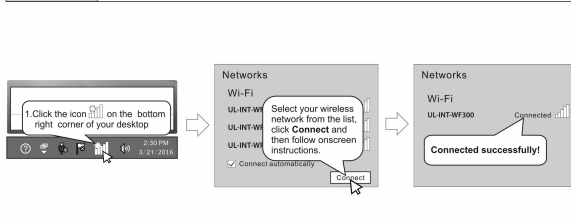
### Mac



### iPhone/iPad

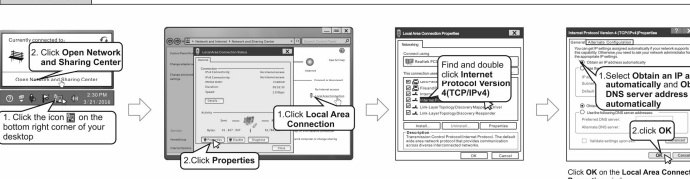


### Windows 8



## Appendix 2 Configure Your PC

### Windows 7



### MAC



## FAQs

- Q1: Where should I place my wireless router for optimum performance?**  
**A1:** For optimum performance, place your device.  
 a. Near the center of the area where your computers, smart phones and other devices operate, and preferably within line of sight to your wireless devices.  
 b. In an elevated location such as a high shelf, keeping the number of walls and ceilings to a minimum between the Router and other clients such as computers and smart phones.  
 c. Away from electrical devices that are potential sources of interference, such as ceiling fans, home security systems, or microwaves.  
 d. Away from any large metal surfaces, such as a solid metal door or aluminum studs.  
 e. Away from other materials such as glass, insolated walls, fish tanks, mirrors, brick, and concrete that can also affect your wireless signal.

- Q2: I cannot log in to the wireless router's web UI. What should I do?**  
**A2:** Please do as the following one by one until you solve your problem.  
 a. Verify the Ethernet cable between your PC and the router is intact and well-connected. If not, change another Ethernet cable.  
 b. Clear cache of your browser, or change another browser.  
 c. Double check the TCP/IP settings on your PC. Verify that it is set to obtain an IP automatically. For details, see Appendix 2 Configure Your PC here.  
 d. Press and hold the WPS/RSST button for about 8 seconds and then release it to reset the router to factory default settings. Then try logging in to it again.  
 e. Try accessing the Web UI from another PC, smart phone or iPad.

- Q3: I forget my WiFi password (security key), what should I do?**  
**A3:** Please do as the following one by one until you solve your problem.  
 a. Log in to the wireless router's Web UI, and view the WiFi password on the Wireless Settings page.  
 b. Restore the wireless router to factory default settings, and reset the WiFi password.  
 Restore Method: Press and hold the WPS/RSST button for about 8 seconds and then release it.

- Q4: I forget my login password, what should I do?**  
**A4:** Restore the wireless router to factory default settings.  
 Restore Method: Press and hold the WPS/RSST button for about 8 seconds and then release it.

Technical Support  
 Tel: (01) 314 8401  
 Website: www.ulink.co.za  
 Email: service@ulink.co.za Contact during business hours  
 Address: CDE Peninsula Park, 92 Ruan Crescent, Corporate Park North, Midrand

## CE

**CE Mark Warning**  
 This is a Class B product. In a domestic environment, this product may cause radio interference, in which case the user may be required to take adequate measures.  
**NOTE:** (1) The manufacturer is not responsible for any radio or TV interference caused by unauthorized modifications to this equipment. (2) To avoid unnecessary radiation interference, it is recommended to use a shielded RJ45 cable.

## FCC

**FCC Statement**  
 This device complies with Part 15 of the FCC Rules. Operation is subject to the following two conditions: (1) This device may not cause harmful interference, and (2) this device must accept any interference received, including interference that may cause undesired operation.  
 This equipment has been tested and found to comply with the limits for a Class B digital device, pursuant to Part 15 of the FCC Rules. These limits are designed to

provide reasonable protection against harmful interference in a residential installation. This equipment generates, uses and can radiate radio frequency energy and, if not installed and used in accordance with the instructions, may cause harmful interference to radio communications. However, there is no guarantee that interference will not occur in a particular installation. If this equipment does cause interference to radio or television reception, which can be determined by turning the equipment off and on, the user is encouraged to try to correct the interference by one or more of the following measures:  
 • Reorient or relocate the receiving antenna.  
 • Increase the separation between the equipment and receiver.  
 • Connect the equipment into an outlet on a circuit different from that to which the receiver is connected.  
 • Consult the dealer or an experienced radio/TV technician for help.  
**Caution:** Any changes or modifications not expressly approved by the party responsible for compliance could void the user's authority to operate this equipment. This transmitter must not be co-located or operating in conjunction with any other antenna or transmitter.

**Radiation Exposure Statement**  
 This equipment complies with FCC radiation exposure limits set forth for an uncontrolled environment. This equipment should be installed and operated with minimum distance 20cm between the radiator & your body.  
**NOTE:** (1) The manufacturer is not responsible for any radio or TV interference caused by unauthorized modifications to this equipment. (2) To avoid unnecessary radiation interference, it is recommended to use a shielded RJ45 cable.